

FREEHOLD



House

2

Brabourne Heights

Marsh Lane

Mill Hill

London

NW7 4NU

Asking price

£965,000

Council Tax Band: F

FEATURES

- High Ceilings
- Recently refurbished
- Off street parking
- Private Garden



ADN
RESIDENTIAL



4 Bedroom House located in London

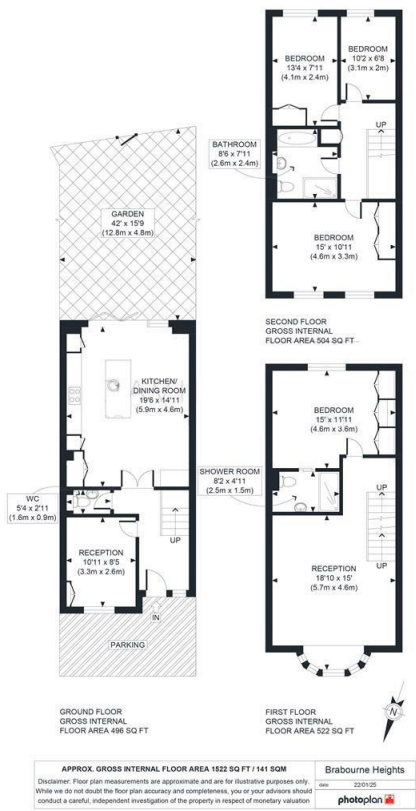
A wonderful opportunity to purchase this bright, mid terraced town house located just off of one of Mill Hill's most sought after tree lined residential turnings.

The property has recently been refurbished throughout and offers flexible, well planned accommodation with the ground floor offering a superb modern kitchen with central island and separate utility area. Furthermore, there is a separate room which is perfect for a dining room or family room, together with a guest cloakroom. This floor also affords direct access to the delightful and quiet, lawned rear garden with a decked patio area.

The first floor provides for a further large reception room with a bay window, as well as a double bedroom with built in wardrobes and an en-suite shower room.

The second and top floor features 3 bedrooms, family bathroom and access to a boarded loft area.

The property has been finished to a high specification with solid wood doors, herringbone flooring in the kitchen and plush grey carpets throughout. Further benefits include off street parking for 2 cars, whilst the transport and shopping facilities of Mill Hill Broadway are approximately 0.7 miles away.



Energy Efficiency Rating		
	Current	Potential
Very energy efficient - lower running costs		
(92 plus) A		
(81-91) B		85
(69-80) C	72	
(55-68) D		
(39-54) E		
(21-38) F		
(1-20) G		
Not energy efficient - higher running costs		
England & Wales	EU Directive 2002/91/EC	

Call us on
020 7407 5155

info@adnresidential.co.uk
www.adnresidential.co.uk



Agents Note: Whilst every care has been taken to prepare these particulars, they are for guidance purposes only. All measurements are approximate and are for general guidance purposes only and whilst every care has been taken to ensure their accuracy, they should not be relied upon and potential buyers are advised to recheck the measurements.